

Art Education
Resources
that **Engage,**
Inform &
Inspire

ROYAL TALENS

Wet into Wet Watercolor Technique

Subject(s): Visual Art & Social Studies
Medium(s): Watercolor
Brand(s): Talens Art Creation



Talens Art Creation watercolor is a transparent paint that is applied thinned with water. The more water you use, the lighter the color of the paint. As a result, many transparent layers can be applied on top of one another.

Watercolor came to western artists in the late 1400s. However, in Asia watercolor techniques using inks had been around for centuries. Some famous western watercolorists worth getting to know are John Singer Sargent (1856 – 1925) Georgia O'Keeffe (1887 – 1986) and Paul Klee (1879 – 1940)

The “**Wet into wet**” technique means **wet** paint is applied to **wet** paper or is added to a wash of fresh **wet** paint. The colors diffuse and spreads in a loose manner. This technique is particularly useful for creating broad areas of diffused color such as backgrounds. Controlling the amount of paint or water on the brush is the key to success.

Project Outline

To explore the application of watercolor paint in a series of a simple wet into wet stepped techniques. Using an uncomplicated shape enables the student to experiment with the technique minus the anxiety of drawing a complex design.

Wet into wet technique is great for both beginners and advanced painters. It loosens the painter's style and can be used as a base for mixed media work. Using ink, pencil, soft pastels, or gouache over washed backgrounds is an excellent way to add design and detail.



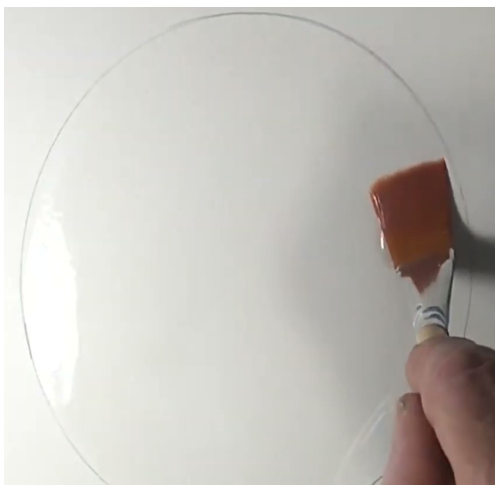


Materials

- Talens Art Creations (TAC) Watercolors
- Palett or mixing dish
- Synthetic Watercolor Brushes
- TAC Watercolor Paper
- HB graphite pencil
- Water Container(s)
- Paper Towels
- Spray bottle
- Isopropyl Alcohol (optional)

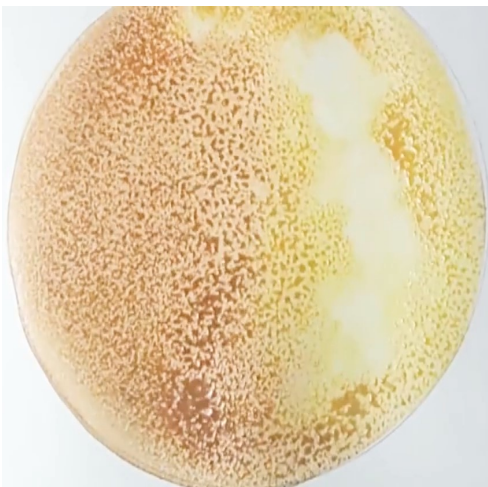
Set Up

- Cover table if needed.
- Lay out paint, brushes, palette or mixing dish, watercolor paper.
- Have plenty of water containers for brush cleaning and paper towels for blotting technique and clean up.
- Make enough room for individuals to work side by side, sitting or standing.
- Have a trash can available with easy access.



- **Begin** by selecting a simple shape (a circular shape such as a glass or bowl is useful template).
- Lightly sketch your design onto TAC watercolor paper using a graphite pencil.
- Using water and a clean brush wet the entire area of the shape.
- While the papers is still wet, starting with the lightest color or values add the paint using your brush.

- Add each darker color or value in succession, shading from light to dark.
- You can blot or remove wet color with a paper towel to create lighter areas.
- When the paint is still wet you can spray or splash 91% Isopropyl alcohol to add texture. A similar though less dramatic effect can be achieved by using just water.
- Come back in when the color is slightly dryer and add detail with a dark colored stroke. You can still blend the paint into the design.



Tips

- Don't overload the brush with paint or water, start with a small amount and add as needed. The image will bleed less.
- White watercolor or opaque gouache can be added when the paint is dry for highlights and detail if desired.
- Combine wet into wet with soft pastels to add texture and mixed media techniques.

National Standards for Art Education

Anchor Standard #2. Refine and complete artistic work.

Grade 3 VA:Cr1.13 Elaborate on an imaginative idea.

Grade 7 VA:Cr1.1.7 Apply methods to overcome creative blocks.

Grade 5 VA:Cr2.1.5a Experiment and develop skills in multiple art-making techniques and approaches through practice.



lens of North America • 30 Industrial Drive • Northampton, MA 01060 • 413.300.1899
www.royaltalensnorthamerica.com

ROYAL  TALENS

Empower your creativity